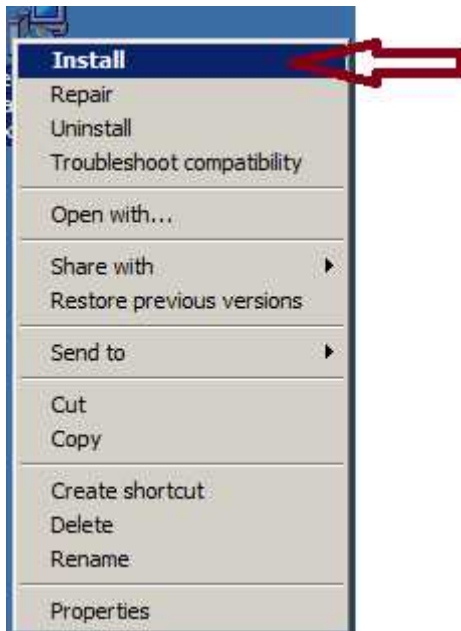


Step wise Installation Procedure for Alladin e-Token

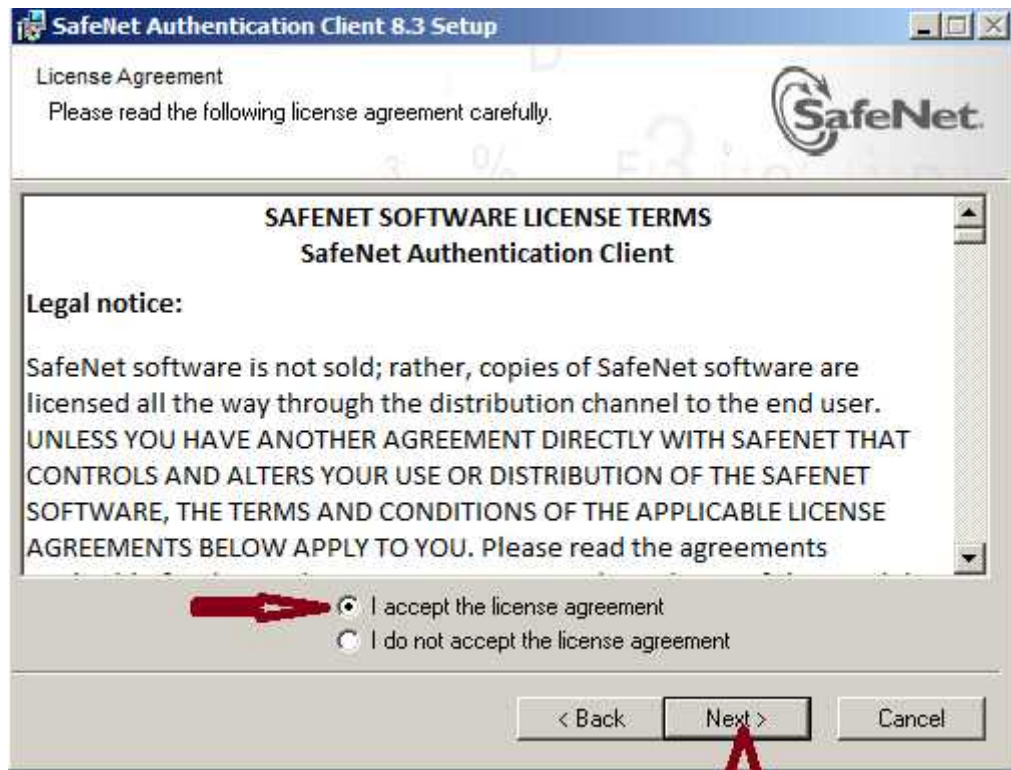
SafeNetAuthenticationClient-x32-8.3 (in 32 bit system)

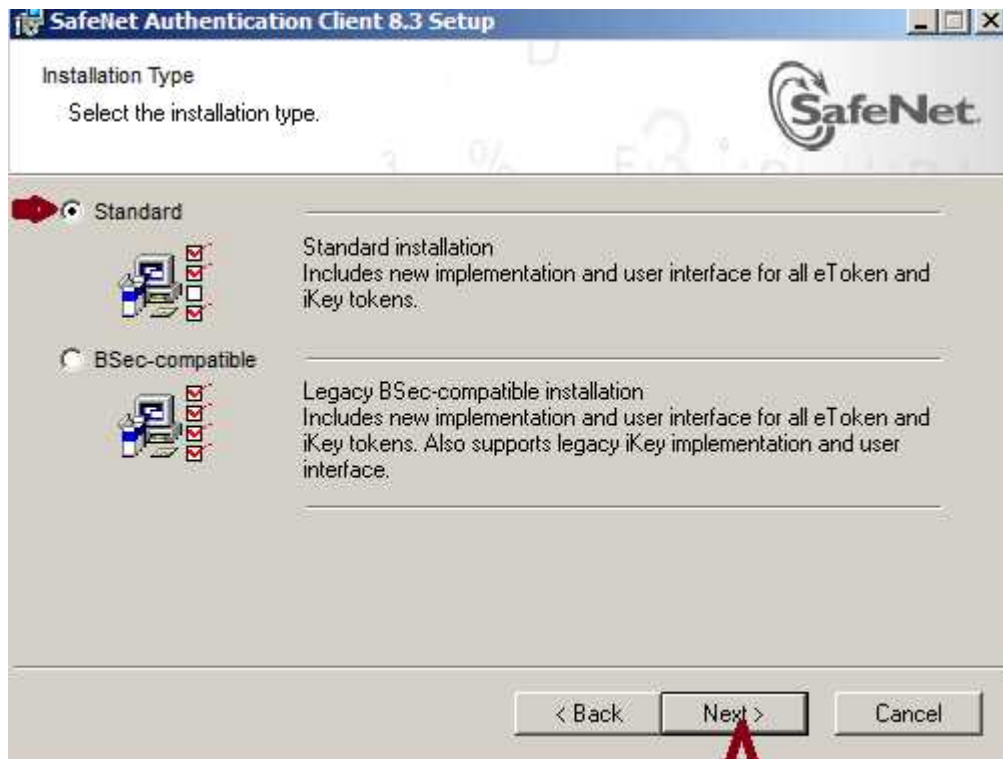
Browser – Internet Explorer Version – 8, 9, 10

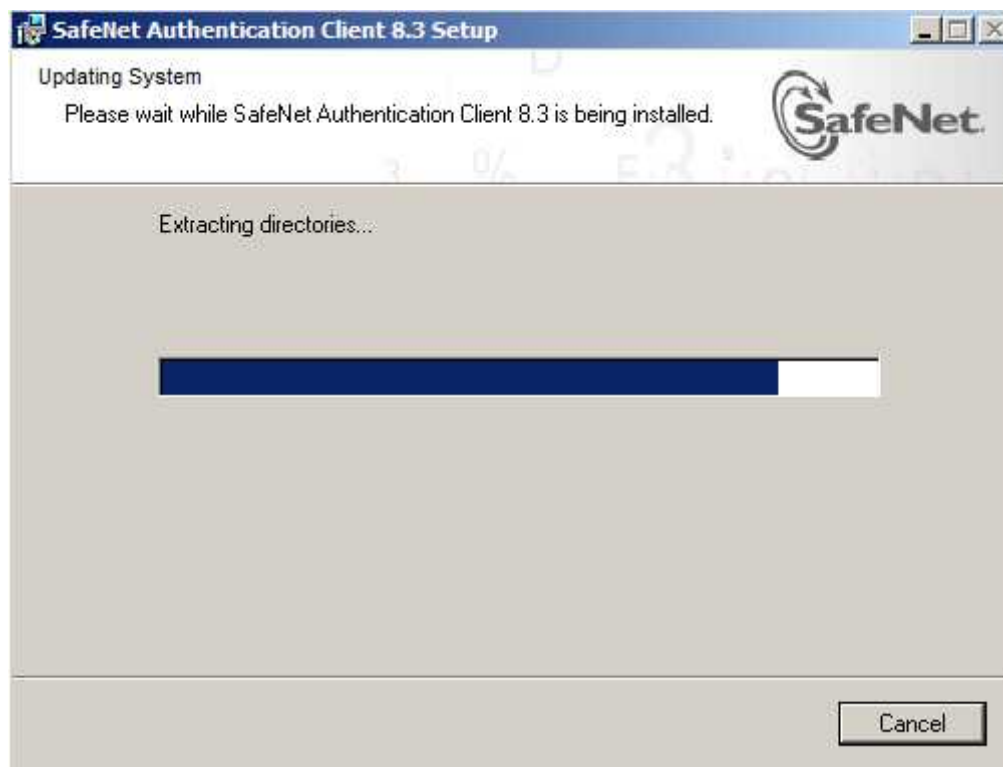
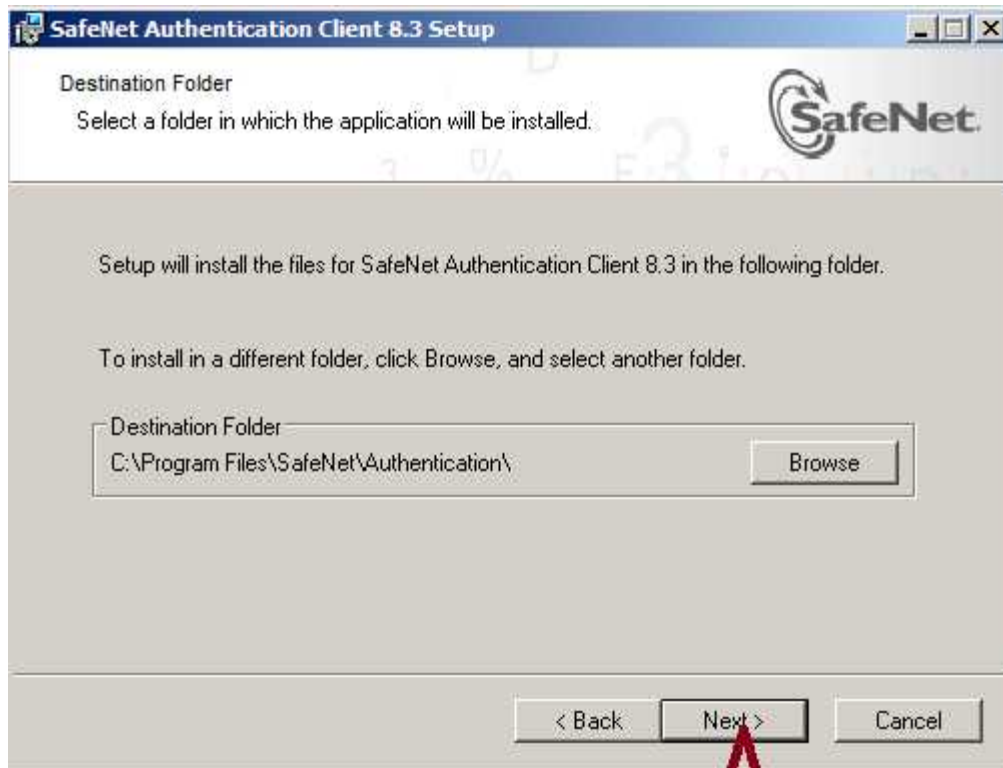
Operating System – Windows 7, 8 & 10

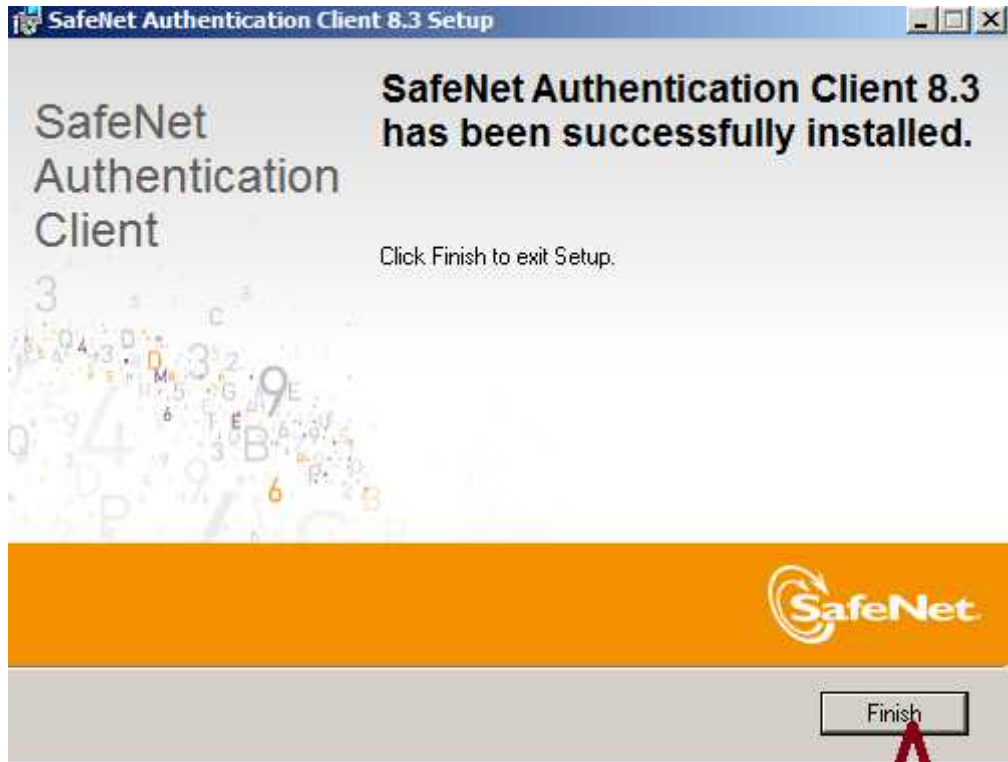








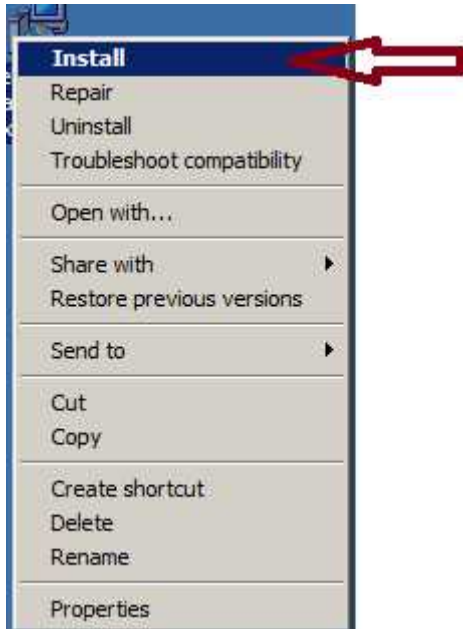




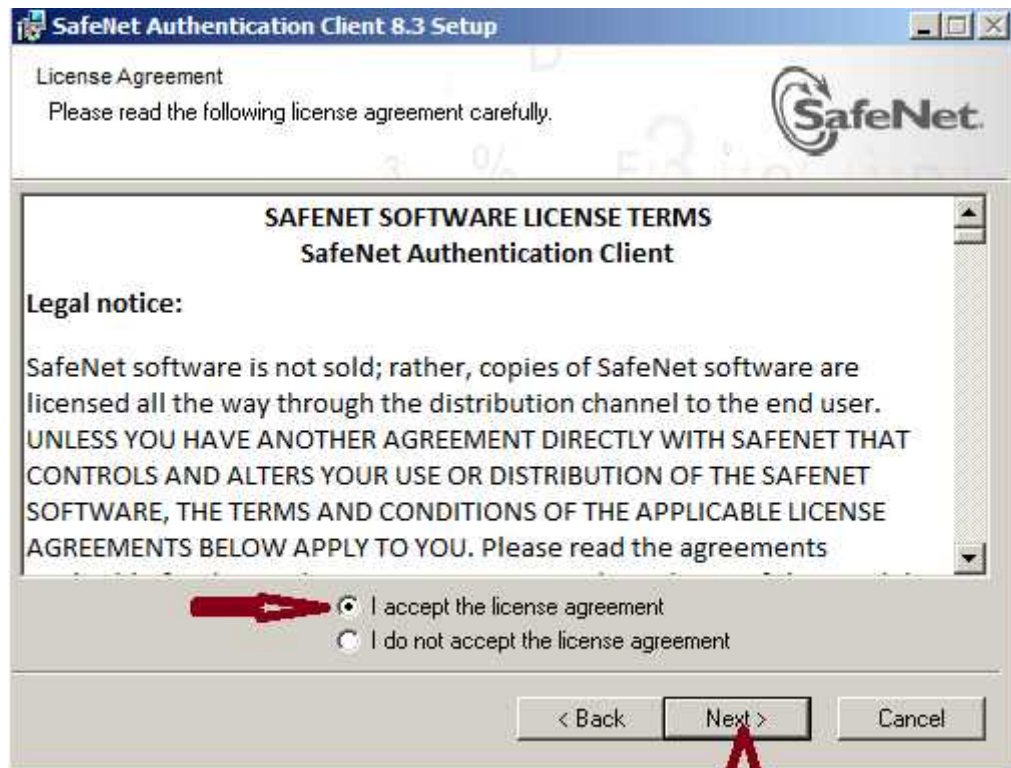
Finish

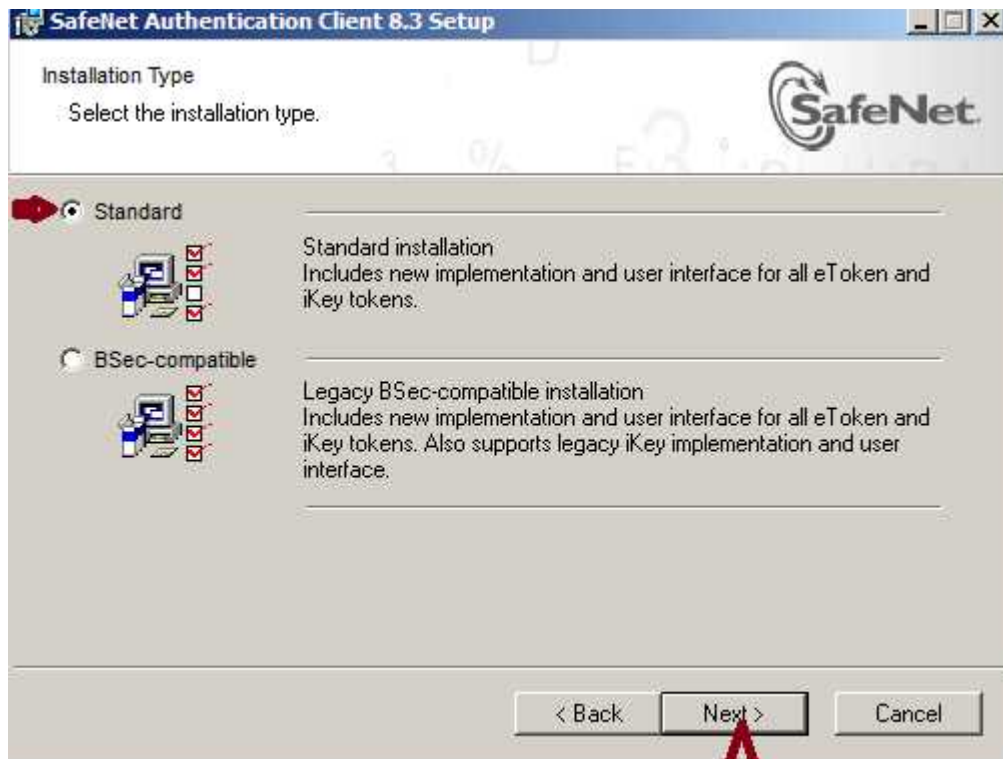


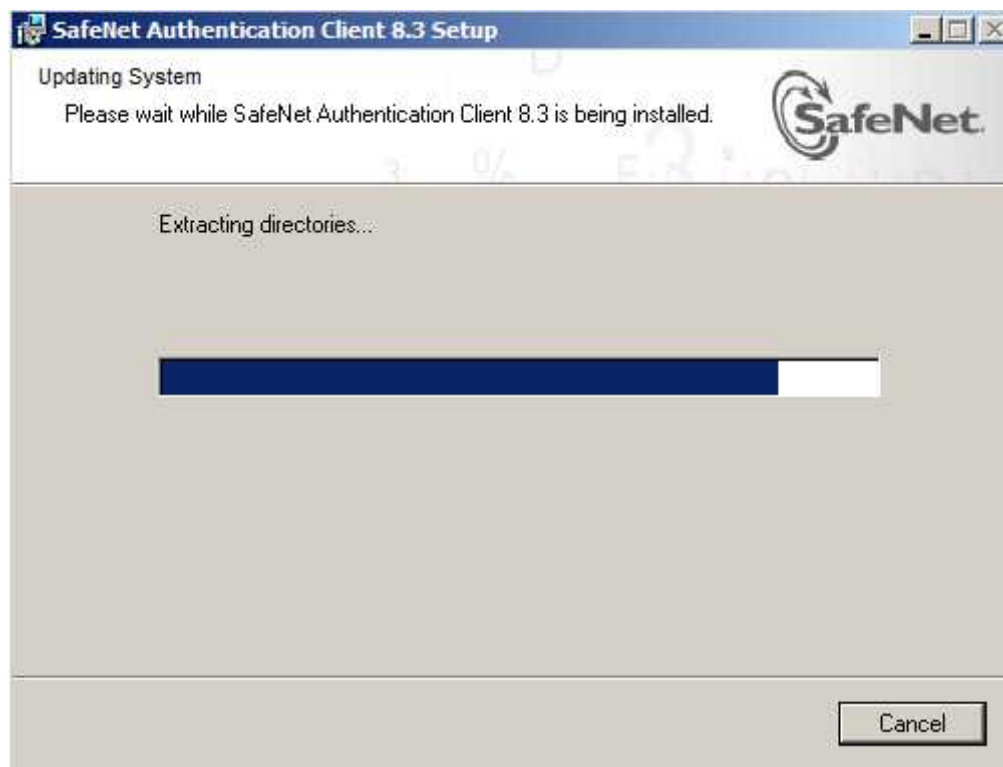
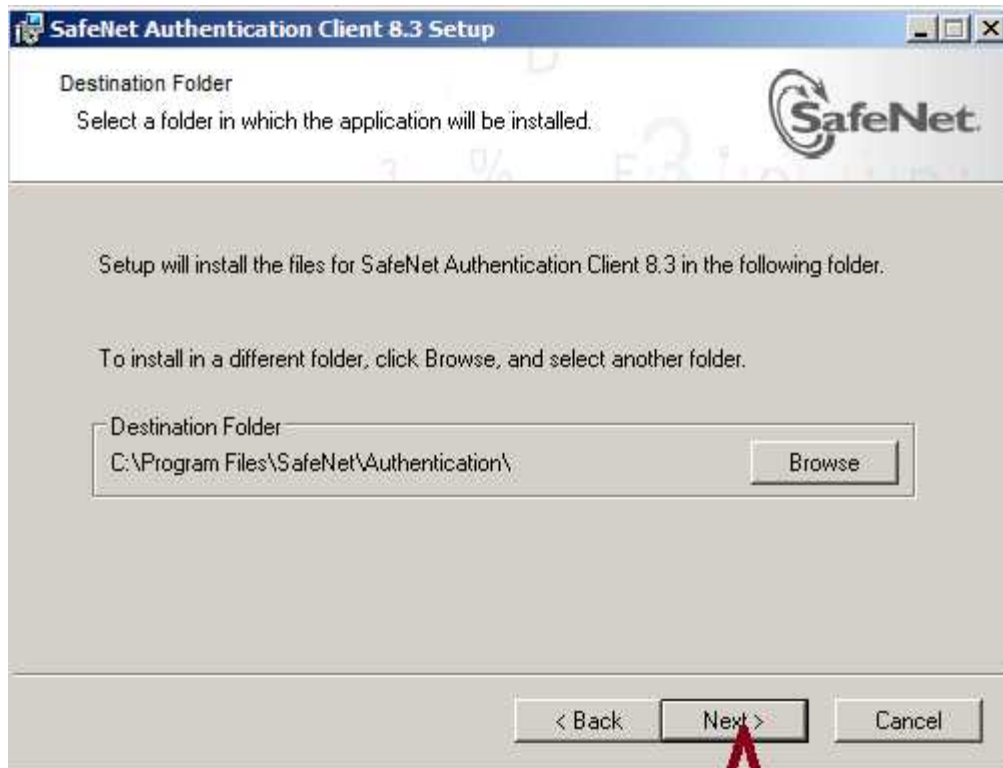
SafeNetAuthenticationClient-x64-8.3 (in 64 bit system)

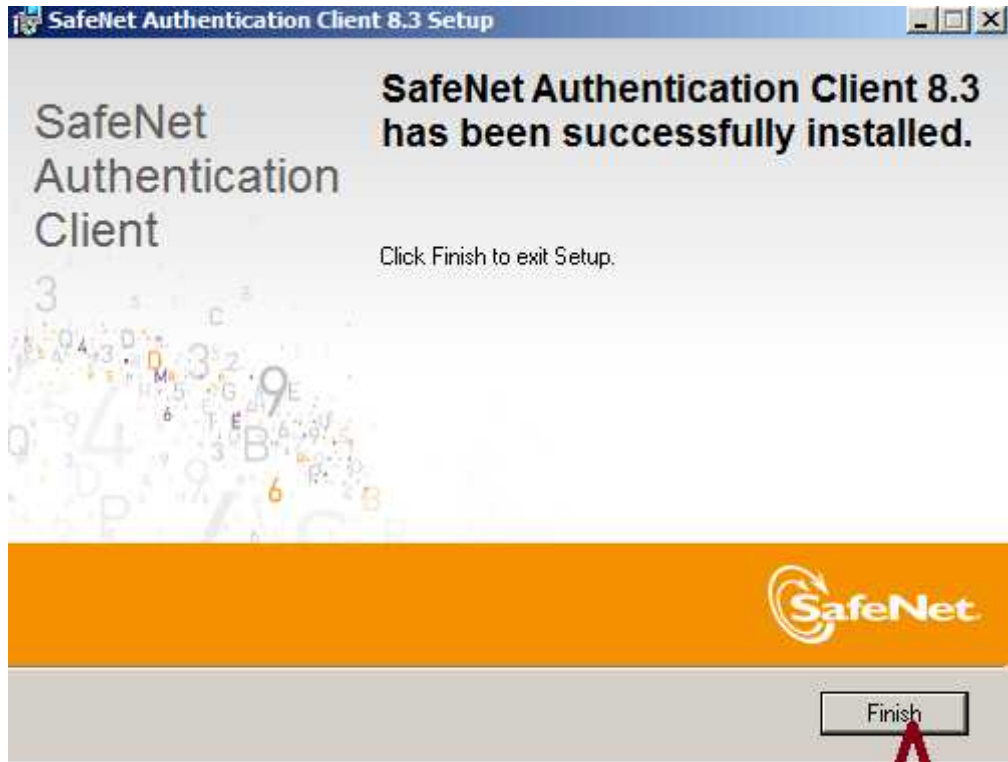








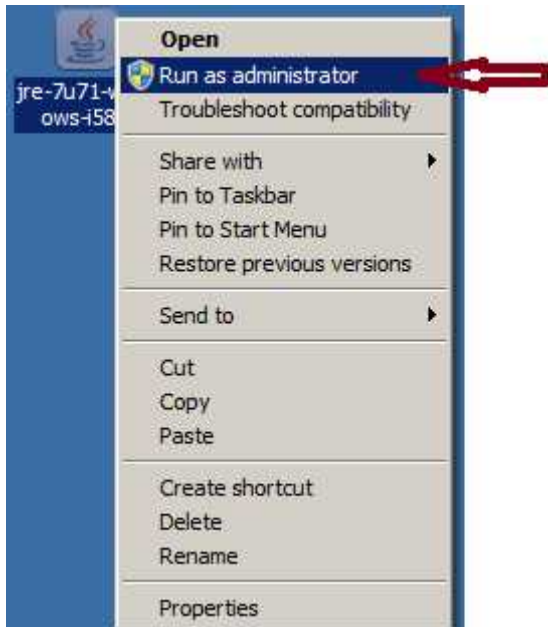




Finish



JAVA Installation Process





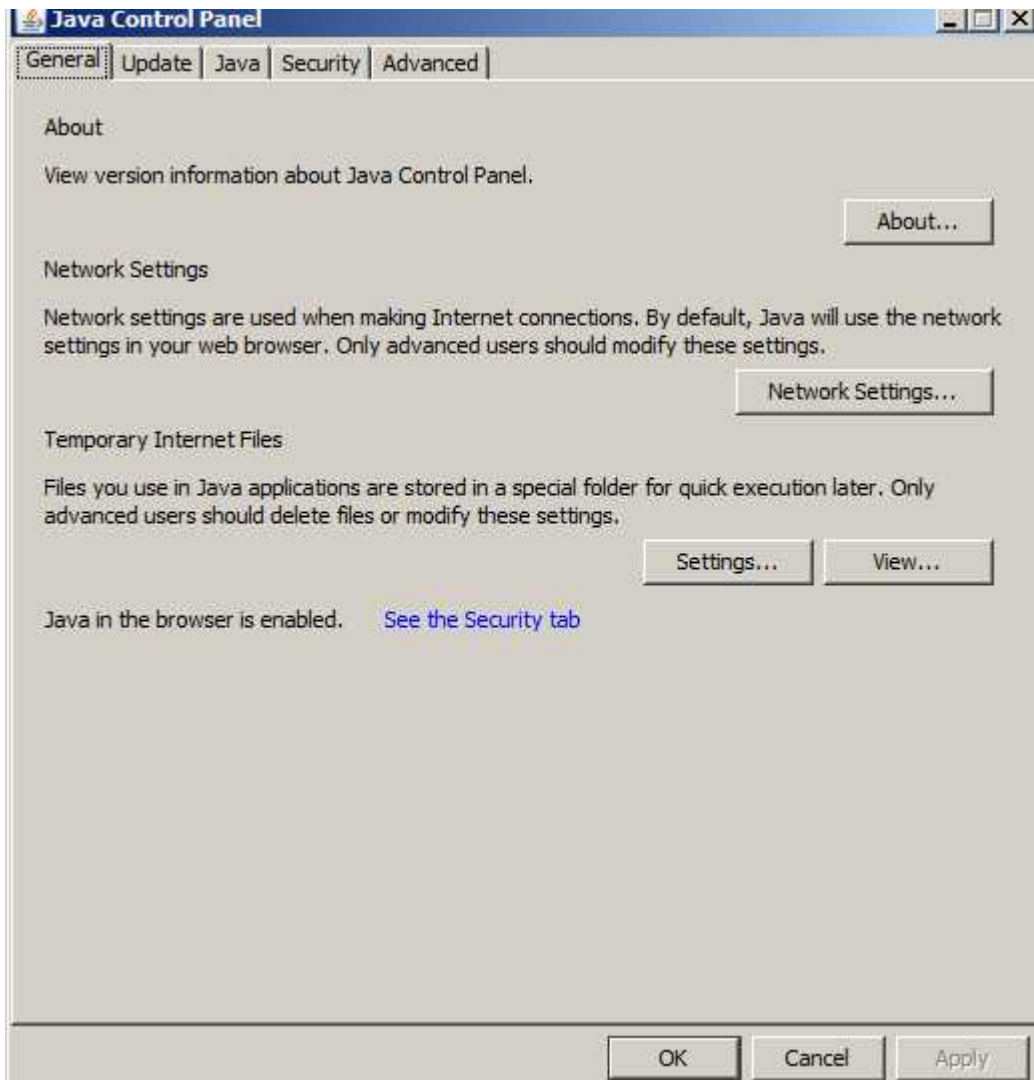
Close



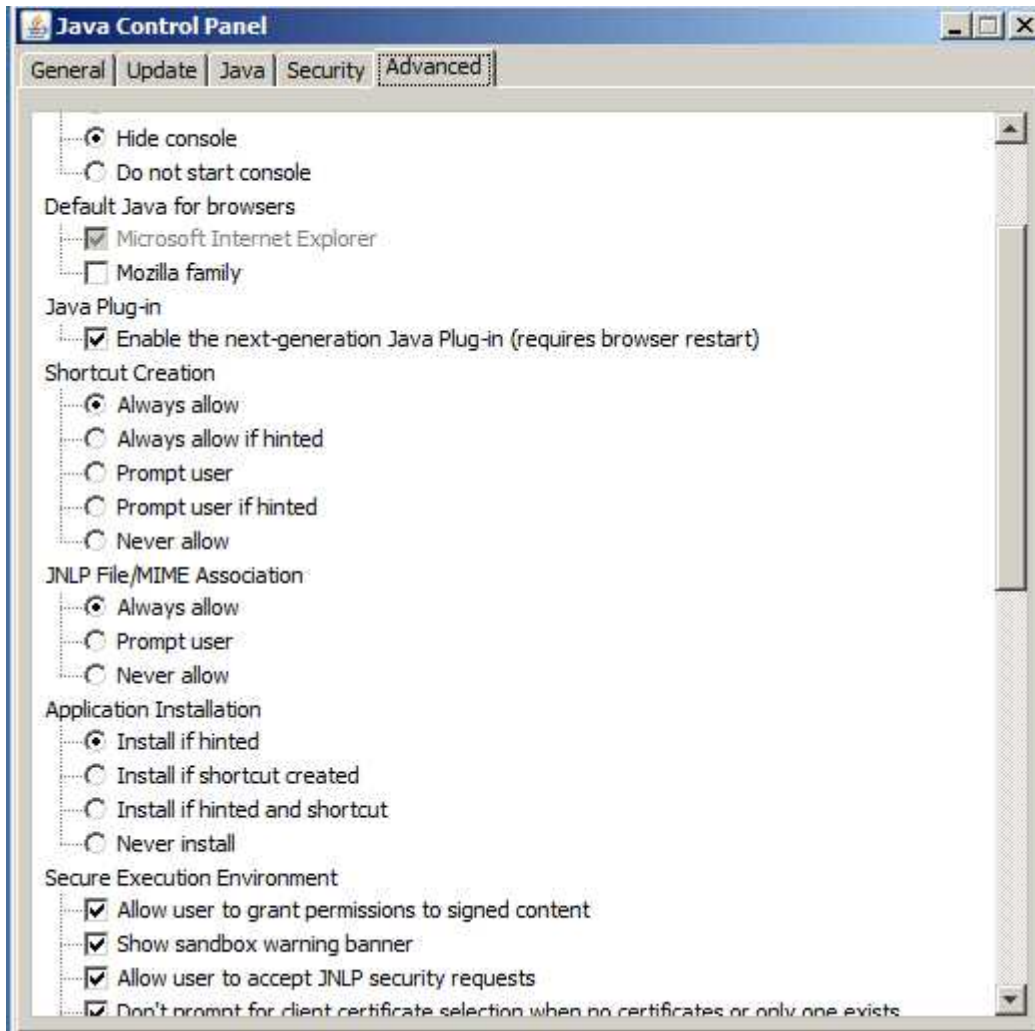
Adjust your computer's settings

- Action Center
- Credential Manager
- Devices and Printers
- Getting Started
- Java (32-bit)
- Network and Sharing Center
- Phone and Modem
- RemoteApp and Desktop Connections
- Taskbar and Start Menu
- Windows Defender
- Administrative Tools
- Date and Time
- Display
- HomeGroup
- Keyboard
- Notification Area Icons
- Power Options
- Sound
- Troubleshooting
- Windows Firewall
- AutoPlay
- Default Programs
- Ease of Access Center
- Indexing Options
- Location and Other Sensors
- Parental Controls
- Programs and Features
- Speech Recognition
- User Accounts
- Windows Update
- Backup and Restore
- Desktop Gadgets
- Folder Options
- Intel(R) GMA Driver
- Mail (32-bit)
- Performance Information and Tools
- Recovery
- Sync Center
- Windows Anytime Upgrade









Please Clear all the Cache, History, Cookies while closing your Browser. This step should be adopted regularly for efficient use of eMunicipality Application.